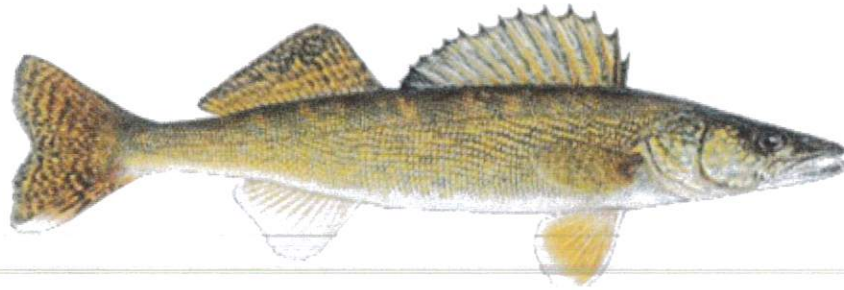


From the KBIC President's Office



Effective May 5, 2026, 10 Quota Lakes Remain Open to Pre-Registration

(Refer to 55 Quota Lake Table, Updated May 5, 2026)

Per Title 38, KBIC Members interested in attempting to spear harvest walleye from Quota Lakes must pre-register with KBIC

Natural Resources Department by contacting us at:

(906) 524-5757 extensions 4226, 4230, or 4240.

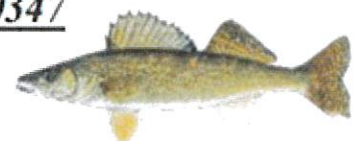
Or by cell at (906) 201-1386, 201-1320, or 201-0347

All KBIC Members must adhere to KBIC Rules and regulations as set forth in Title 38.

You must bring appropriate Tribal Member and Non-Commercial Fishing, Hunting, Trapping and Gathering License information for actual spearing activity. Additional instructions on Quota Lakes and associated management will be available. Registration will be required on a nightly basis.

NOTE!: Refer to Amendment 2014-04 for specific information regarding “Quota Lakes” (Title 38) In 2025, 50 lakes have been designated as Quota Lakes, and may be closed and reopened at the discretion of the KBIC President. Pre-registration with KBIC-NRD is required.

Feel free to contact the KBIC Natural Resources Department
for More Information: (906) 201-1386, 201-1320, or 201-0347
(906) 524-5757 extensions 4226, 4230, or 4240



Status of Quota Lakes (May 5th, 2026). 10 Lakes Remain Open for Potential Spear Harvest Effort (Must Pre-Register with KBIC-NRD)

PRIORITY ID	COUNTY	LAKE	STATUS	PRIORITY ID	COUNTY	LAKE	STATUS
1	HOUGHTON	PORTAGE L	CLOSED (May 5, 2026)	33	IRON	CABLE L	CLOSED (May 5, 2026)
2	BARAGA	PARENT L	CLOSED (April 26, 2026)	34	MARQUETTE	DEAD R STORAGE BASIN	CLOSED (May 5, 2026)
3	BARAGA	BEAUFORT L	OPEN	35	MARQUETTE	GREENWOOD RES.	CLOSED (May 5, 2026)
4	KEWEENAW	GRATIOT L	OPEN	36	IRON	TEPEE L	CLOSED (May 5, 2026)
5	KEWEENAW	L FANNY HOOE	OPEN	37	BARAGA	CRAIG L	CLOSED (May 5, 2026)
6	BARAGA	VERMILAC (WORM) L	CLOSED (May 5, 2026)	38	BARAGA	KEEWAYDEN L	CLOSED (May 5, 2026)
7	KEWEENAW	LAC LA BELLE	OPEN	39	HOUGHTON	SANDY L	CLOSED (May 5, 2026)
8	KEWEENAW	L MEDORA	OPEN	40	BARAGA	SPRUCE L	CLOSED (May 5, 2026)
9	HOUGHTON	TORCH L	CLOSED (May 5, 2026)	41	MARQUETTE	FISH L	CLOSED (May 5, 2026)
10	HOUGHTON	BOB L	CLOSED (May 5, 2026)	42	MARQUETTE	PIKE L	CLOSED (May 5, 2026)
11	IRON	PERCH L	CLOSED (May 5, 2026)	43	DICKINSON	ISLAND L (POND 1)	CLOSED (May 5, 2026)
12	MARQUETTE	L MICHIGAMME	OPEN	44	DICKINSON	PICKEREL L	CLOSED (May 5, 2026)
13	IRON	WINSLOW	CLOSED (May 5, 2026)	45	DICKINSON	SAWYER L	CLOSED (May 5, 2026)
14	ONTONAGON	BOND FALLS	CLOSED (May 5, 2026)	46	MARQUETTE	MCLURE BASIN	CLOSED (May 5, 2026)
15	HOUGHTON	RICE L	OPEN	47	MARQUETTE	FORESTVILLE BASIN	CLOSED (May 5, 2026)
16	ONTONAGON	SUDDEN	CLOSED (May 5, 2026)	48	MARQUETTE	GOOSE L	CLOSED (May 5, 2026)
17	DICKINSON	SILVER L	CLOSED (May 5, 2026)	49	ONTONAGON	SIX MILE L	CLOSED (May 5, 2026)
18	MARQUETTE	L INDEPENDENCE	CLOSED (May 5, 2026)	50	DICKINSON	GENE POND	CLOSED (May 5, 2026)
19	MARQUETTE	TEAL L	OPEN	51	IRON	PORTER L	CLOSED (May 5, 2026)
20	BARAGA	RUTH L	OPEN	52	BARAGA	ST. JOHNS L	CLOSED (May 5, 2026)
21	MARQUETTE	DEER L	CLOSED (May 5, 2026)	53	HOUGHTON	BEAR L	CLOSED (May 5, 2026)
22	ONTONAGON	VICTORIA	CLOSED (May 5, 2026)	54	MARQUETTE	LITTLE L	CLOSED (May 5, 2026)
23	HOUGHTON	PRICKETT BACKWATERS	CLOSED (May 5, 2026)	55	BARAGA	ROLAND	CLOSED (May 5, 2026)
24	HOUGHTON	PIKE L	CLOSED (May 5, 2026)				
25	MARQUETTE	WITCH L	CLOSED (May 5, 2026)				
26	IRON	STE KATHRYN	CLOSED (May 5, 2026)				
27	HOUGHTON	L GERALD	CLOSED (May 5, 2026)				
28	HOUGHTON	L ROLAND	CLOSED (May 5, 2026)				
29	BARAGA	KING L	CLOSED (May 5, 2026)				
30	HOUGHTON	OTTER L	CLOSED (May 5, 2026)				
31	BARAGA	BIG L	CLOSED (May 5, 2026)				
32	BARAGA	GEORGE L	OPEN				

MORE OPTIMAL LAKES
POTENTIALLY GOOD LAKES
LOW LIKLIHOOD LAKES
VERY LOW LIKLIHOOD LAKES
NEW QUOTA LAKES